



## *Week In Review*

**February 6, 2023**

---

### *Quarterly Meeting*

The next Quarterly Meeting of the ICD will be on **Thursday, February 16, 2022**, from **10:30 am - 12:00 pm**, online.

Topics of Discussion include:

- Flu Season 2022-2023
- School Health
- Emerging Infectious Disease
- COVID-19
- HPV and Geography
- RSV Vaccines

[Register Here](#)

---

### *Updates*

ACIP Meeting ([ACIP](#))

- February 22-23, 2023. MPox vaccine, Rotavirus Vaccine, Influenza Vaccine. Meningococcal Vaccines, Polio Vaccines.

COCA Call ([COCA](#))

- Thursday, February 23. Evaluating and Supporting Children and Adolescents Presenting with Post-COVID Conditions.

Vaccines and Related Biological Products Advisory Committee ([VRBPAC](#))

- February 28 - March 1, 2023. Topics include the safety of ABRYSSVO and AREXVY (RSV Vaccines by Pfizer and GSK, respectively).

MMWR Weekly ([No 5](#))

- COVID-19 mortality and progress toward vaccinating older adults (WHO)
- Early estimates of bivalent mRNA booster dose vaccine effectiveness in preventing symptomatic SARS-CoV-2 infection attributable to omicron BA.5- and XBB/XBB.1.5-related sublineages
- Spike gene target amplification in a diagnostic assay as a marker for public health monitoring of emerging SARS-CoV-2 variants

- Information for persons who are immunocompromised regarding prevention and treatment of SARS-CoV-2 infection in the context of currently circulating omicron sublineages

Food & Drug Administration

- None.



## 2022-2023 Flu Season

Week 4 (week ending January 28)

- Clinical Lab positivity: 2.1%
- Public Health Lab: Most frequently reported viruses: A(H3N2)
- Outpatient respiratory illness: 2.6%

Burden Estimates

- Illnesses: 25 M - 49 M
- Medical Visits: 12 M - 23 M
- Hospitalizations: 280,000 - 600,000
- Deaths: 17,000 - 53,000

Seasonal influenza activity continues to decline across the country.

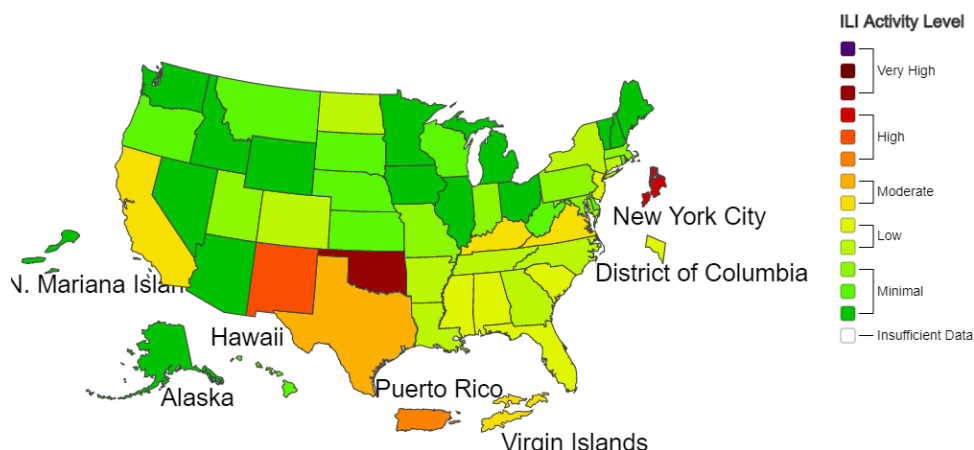


A Weekly Influenza Surveillance Report Prepared by the Influenza Division

Outpatient Respiratory Illness Activity Map Determined by Data Reported to ILINet

This system monitors visits for respiratory illness that includes fever plus a cough or sore throat, also referred to as ILI, not laboratory confirmed influenza and may capture patient visits due to other respiratory pathogens that cause similar symptoms.

2022-23 Influenza Season Week 4 ending Jan 28, 2023



\*This map uses the proportion of outpatient visits to healthcare providers for influenza-like illness to measure the ILI activity level within a state. It does not, however, measure the extent of geographic spread of flu within a state. Therefore, outbreaks occurring in a single city could cause the state to display high activity levels.

\*Data collected in ILINet may disproportionately represent certain populations within a state, and therefore may not accurately depict the full picture of influenza activity for the whole state.

\*Data displayed in this map are based on data collected in ILINet, whereas the State and Territorial flu activity map are based on reports from state and territorial epidemiologists. The data presented in this map is preliminary and may change as more data is received.

\*Differences in the data presented by CDC and state health departments likely represent differing levels of data completeness with data presented by the state likely being the more complete.

\*For the data download you can use Activity Level for the number and Activity Level Label for the text description.

\*This graphic notice means that you are leaving an HHS Web site.

For more information, please see CDC's Exit Notification and Disclaimer policy.

For more information on the methodology, please visit Outpatient Illness Surveillance methods section.

## Delaware Flu Cases

- Year to Date: 8,823
- New Castle: 4,062
- Kent: 2,188
- Sussex: 2,575
- This Week: 38
- ILI Rate: 11.6%
- Hospitalizations this Week: 0
- Deaths: 1
- Vaccines Administered: 312,104 (32.3%)

## Updates

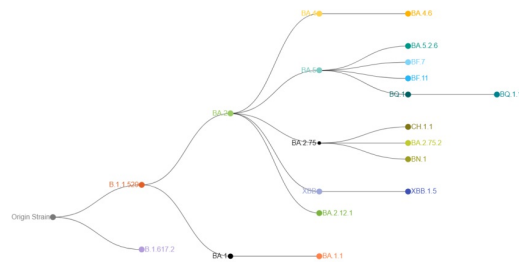
## Coronavirus Updates

### Delaware ([MyHealthyCommunity](#))

Total - 326,847

Deaths - 3,265 (25.6 per 10,000 people)

- New Castle - 184,794
- Kent - 63,646
- Sussex - 77,295
- Hospitalizations - 173
- Critical - 10
- Tests Positive: 13.6%
- Vaccines
  - Fully Vaccinated - 644,764 (66.6%)
  - Partially Vaccinated - 95,358
  - Bivalent - 180,491



### Updates

- CDC provides an update on the most common [Omicron](#) lineages currently circulating in the US (image above)
- US House of [Representatives](#) to vote next week to end foreign air traveler COVID vaccine mandate.
- What [ending](#) the COVID-19 Health Emergency means

## EMERGING INFECTIOUS DISEASES®

**February 2023**  
Volume 29, Issue 2  
Emerging Pathogens

[Read More](#)

## Outbreak News

### [WHO Disease Outbreak News](#)

January 18: Ecuador - Human infection caused by avian influenza A(H5)

February 2: Paraguay - Measles

### [CDC Outbreak List](#)

December



- Raw Oysters - *Norovirus*

## [Travel Notices](#)

- Alert, Level 2
  - Polio - Global
  - COVID-19 - China, Hong Kong, Macau
  - Japanese Encephalitis - Australia
- Watch, Level 1
  - Measles - Africa
  - Dengue - Africa and the Middle East



**IZ Express**

Weekly news  
from [Immunize.org](http://Immunize.org)

## Issue [1675](#): February 1, 2023

- February 28 webinar, "Improving the vaccination experience: reducing pain and anxiety for children and adults."
- Early estimates of bivalent mRNA vaccine effectiveness in preventing symptomatic SARS-CoV-2 infection attributable to Omicron BA.5- and XBB/XBB.1.5-related sublineages among immunocompetent adults
- Information for persons who are immunocompromized regarding prevention and treatment of SARS-CoV-2 infection in the context of currently circulating omicron sublineages
- Lab-confirmed COVID-19 case incidence rates among residents in nursing homes by up-to-date vaccination status

## ***Community Mobile Health Units***

DPH [Mobile Health Units](#) provide HIV testing, counseling, and referral; COVID-19 testing and vaccines; blood lead testing; flu vaccines; and educational and resource connections. Click for weekly mobile unit times and locations.



- Experimental NIH [Sudan virus](#) vaccine protects macaques
- The new [hashtag](#) (dies suddenly) twists tragedies to push anti-vaccine agenda
- [Marburg](#) vaccine shows promising results in first-in-human study
- WHO Statement of the 34th [Polio](#) IHR Emergency Committee

<https://www.immunizedelaware.org/>

If you have something you'd like to see added to the ICD's Week in Review, please let us know!

The next ICD Quarterly Meeting will be held on February 16, 2023

[Register Here](#)

See what's happening on our social sites:



Delaware Academy of Medicine and the Delaware Public Health Association | Suite L10, 4765  
Ogletown-Stanton Road, Newark, DE 19713

[Unsubscribe tjibbs@delamed.org](mailto:tjibbs@delamed.org)

[Update Profile](#) | [Constant Contact Data  
Notice](#)

Sent by [byksmith@delamed.org](mailto:byksmith@delamed.org) powered by



Try email marketing for free today!