



# Week In Review

December 27, 2022

## 2022 Communicable Disease & PrEP Summit

Did you miss the 2022 Communicable Disease & PrEP Summit? All recordings and slide decks are now available online at our website.

[Go To Website](#)

## Updates

### ACIP Meeting ([ACIP](#))

- None listed.

### COCA Call ([COCA](#))

- None listed.

### Vaccines and Related Biological Products Advisory Committee ([VRBPAC](#))

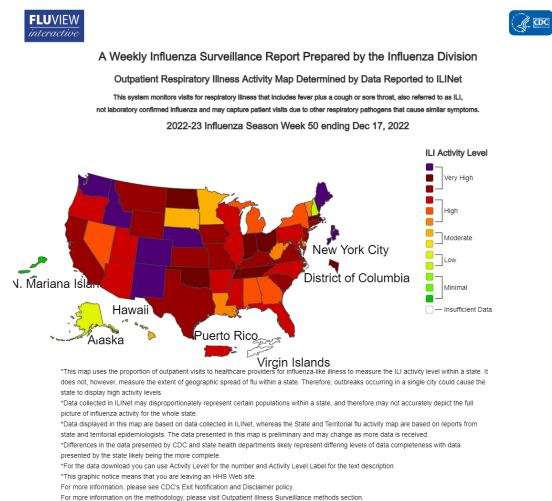
- January 16, 2023: Potential [modification](#) of the composition for primary COVID-19 vaccines

### MMWR Weekly ([No 50](#))

- Progress toward measles and rubella elimination - India
- COVID-19 and other underlying causes of cancer deaths
- Prevalence of SARS-CoV-2 and influenza coinfection and clinical characteristics among children and adolescents aged <18 years who were hospitalized or died with influenza 2021-2022

### Food & Drug Administration

- FDA authorizes updated (bivalent) COVID-19 [vaccines](#)



for children down to 6 months  
of age



## ***2022-2023 Flu Season***

Week 50 (week ending December 17)

- Clinical Lab positivity: 24.4%
- Public Health Lab: Most frequently reported viruses: A(H3N2)
- Outpatient respiratory illness: 6.%

Burden Estimates

- Illnesses: 18 M - 37 M
- Medical Visits: 8.6 M - 18 M
- Hospitalizations: 190,000 - 400,000
- Deaths: 12,000 - 35,000

Delaware Flu Cases

- Year to Date: 6,738
- New Castle: 3,116
  
- This Week: 1,014
- New Castle: 461
- Kent: 103
- ILI Rate: 3.1%
  
- Hospitalizations: n/a
- Deaths: 1
- Vaccines Administered: 286,636 (29.6%)

Updates

- DPH announces first suspected flu-related [death](#), urges public to get vaccinated before the end of the year

---

## ***Coronavirus Updates***

**Delaware** ([MyHealthyCommunity](#))

Total - 320,581

Deaths - 3,205

- New Castle - 181,881
- Kent - 62,468
- Sussex - 75,105
- Hospitalizations - 178
- Critical - 12
- Tests Positive: 12.1%
- Vaccines
  - Fully Vaccinated - 642,677 (66.4%)
  - Partially Vaccinated - 94,624

- Bivalent - 163,356

## Updates

- DPH announces [updates](#) to COVID-19 testing options in Delaware
- 

## Mpox Updates

- 2022 [US Map & Case Count](#): 29,740 total confirmed mpox/orthopoxvirus cases
    - Delaware - 43
    - Maryland - 738
    - New Jersey - 763
    - Pennsylvania - 864
    - Virginia - 563
- 

## EMERGING INFECTIOUS DISEASES®

**January 2023**  
Volume 29, Issue 1  
Vectorborne Infections

[Read More](#)

---

## Outbreak News

### [WHO Disease Outbreak News](#)

December 8: Uganda - Ebola (Sudan)  
December 13: Haiti - Cholera  
December 15: Multi - Scarlet Fever & Group A Strep  
December 16: Global - Cholera  
December 19: Indonesia - cVDPV2



### [CDC Outbreak List](#)

December

- Raw Oysters - *Norovirus*

### [Travel Notices](#)

- Alert, Level 2
  - Japanese Encephalitis - Australia
  - Polio - Global
  - Ebola - Uganda
- Watch, Level 1
  - Measles - Africa
  - Dengue - Africa and the Middle East



**IZ Express**

Weekly news  
from [Immunize.org](http://Immunize.org)

---

Issue [1671](#): December 21, 2022

- New webinar ("Improving the Vaccination Experience: Accessible

- Vaccination for Neurodiverse People at Any Age") now available
- Early estimates of bivalent mRNA vaccine effectiveness at preventing COVID-19

---

## ***Community Mobile Health Units***

DPH [Mobile Health Units](#) provide HIV testing, counseling, and referral; COVID-19 testing and vaccines; blood lead testing; flu vaccines; and educational and resource connections. Click for weekly mobile unit times and locations.

---



- China's [COVID-19](#) infections surge
  - WHO updates recommendations on [HPV](#) vaccination schedule
- 

Immunization Coalition of Delaware  
<https://www.immunizedelaware.org/>

If you have something you'd like to see added to the ICD's Week in Review, please let us know!

The next ICD Quarterly Meeting will be held on February 16, 2023

[Register Here](#)

See what's happening on our social sites:



Delaware Academy of Medicine and the Delaware Public Health Association | Suite L10, 4765  
Ogletown-Stanton Road, Newark, DE 19713

[Unsubscribe tjibbs@delamed.org](mailto:tjibbs@delamed.org)

[Update Profile](#) | [Constant Contact Data  
Notice](#)

Sent byksmith@delamed.org powered by



Try email marketing for free today!